



Stockwell Green, Brixton, SW9

£510,000

2 bedroom flat - purpose built for sale

Property Details

A superb two bedroom, two bathroom apartment, on the ground floor of a popular development, perfectly positioned within a short walk of three different underground stations at Brixton (seven-minute walk), Stockwell (six-minute walk) and Clapham (nine-minute walk). This fantastic property comprises a reception room with doors that lead into a private outside area, a contemporary kitchen, two genuine double bedrooms and two modern bathrooms. There is also the added benefit of an allocated off-street parking space, plus well-maintained communal gardens to the rear.

Features

- Two double bedrooms
- Secure modern development
- Walking distance to the Northern and Victoria tube lines
- Close to transport links
- Allocated off street parking space
- Private outside space
- Gym

Council tax band EPC rating C (79)



Stockwell Green, Brixton, SW9

K

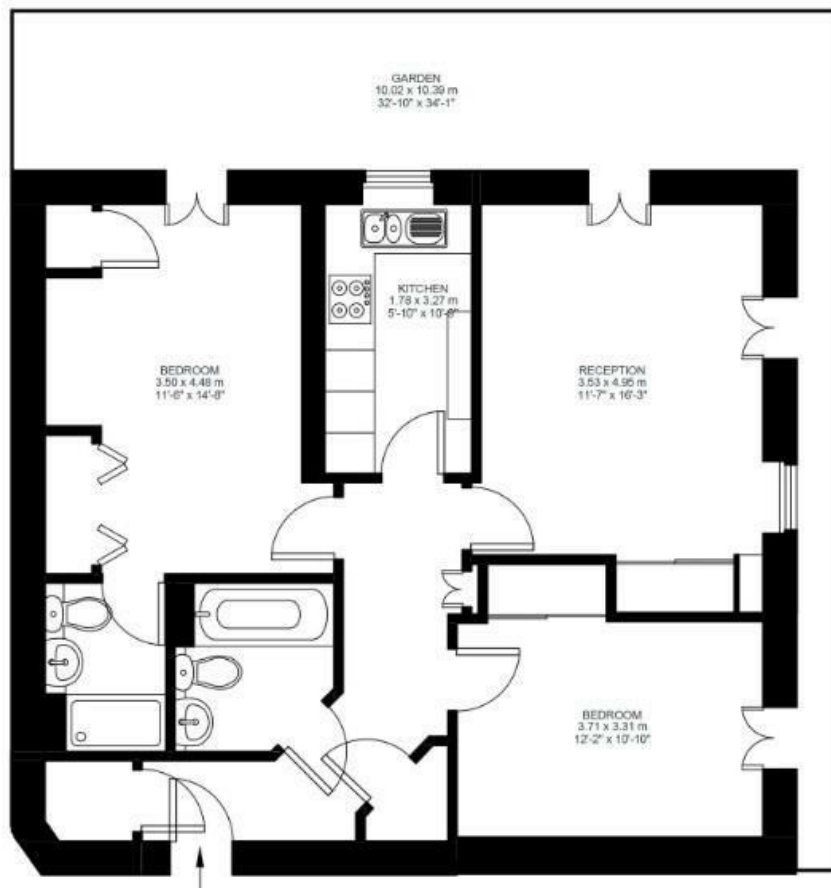
Stockwell Green

2 Bed flat

Approx internal area:

722 sqft 67 sqm

While we do try our very best, floor plans are produced as a guide only and we take no responsibility for the precise accuracy with which any property is represented



Ground Floor



Stockwell Green, Brixton, SW9

